

Role of NG2 proteoglycan in macrophage recruitment to brain tumors and sites of CNS demyelination

Pilar Cejudo-Martin[#], Karolina Kucharova[#] and William B. Stallcup*

Sanford Burnham Prebys Medical Discovery Institute, Cancer Center, Tumor Microenvironment and Cancer Immunology Program, 10901 North Torrey Pines Road, La Jolla, CA 92037, USA.

ABSTRACT

Macrophage infiltration is a factor in most if not all inflammatory pathologies. Understanding molecular interactions that underlie this process is therefore important for our ability to modulate macrophage behavior for therapeutic purposes. Our studies show that cell surface expression of the nerve-glia antigen 2 (NG2) proteoglycan is important for the ability of macrophages to colonize both brain tumors and sites of central nervous system (CNS) demyelination. Myeloid-specific ablation of NG2 using LysM-Cre deleter mice results in large decreases in macrophage abundance in both an intracranial melanoma model and a lysolecithin model of spinal cord demyelination. In the melanoma model, decreased macrophage recruitment in the NG2 null mice leads to diminished tumor growth. In line with observations in the literature, this phenomenon is based in part on deficits in tumor vascularization that result from loss of pericyte interaction with endothelial cells in the absence of a macrophage-derived factor(s). In the demyelination model, decreased macrophage infiltration in the NG2 null mice is associated with an initial reduction in lesion size, but nevertheless also with deficits in repair of the lesion. Diminished myelin repair is due not only to reduced clearance of myelin debris, but also to decreased proliferation/recruitment of oligodendrocyte progenitor cells in the absence of a macrophage-derived factor(s). Thus, in both models

macrophages have secondary effects on other cell types that are important for progression of the specific pathology. Efforts are underway to identify mechanisms by which NG2 influences macrophage recruitment and by which macrophages signal to other cell types involved in the pathologies.

KEYWORDS: NG2 proteoglycan, macrophages, pericytes, oligodendrocyte progenitor cells, CNS demyelination, inflammation, brain tumors

1. Introduction

Macrophages are an important part of the innate immune response, and as such, are vital components in the initial host response to pathogens. Thus, recruitment/infiltration of these myeloid cells is a prominent aspect of most, if not all, inflammatory pathologies. In cases of chronic inflammation, macrophage phenotypes can be subverted to perform functions that promote progression of the pathology. The actions of immune suppressive tumor-associated macrophages are a good example of this phenomenon [1, 2], but there are additional pathologies, such as atherosclerosis [3], in which the plasticity of macrophage phenotype and function are exploited to the advantage of the pathology. In our recent work, we have investigated the importance of the NG2 proteoglycan in macrophage recruitment and participation in two CNS pathologies: brain tumor progression and demyelination/remyelination of the spinal cord. NG2 expression in other types of immature and progenitor cells has been found to be important for various aspects of cell behavior, including proliferation, motility, and survival [4, 5].

*Corresponding author: stallcup@SBPdiscovery.org

[#]These authors contributed equally to the work

NG2 therefore has the potential to participate in mechanisms that may help account for the plasticity of macrophage phenotypes.

2. Macrophage expression of NG2

Studies from several research groups have noted prominent expression of NG2 by macrophages [6-10]. This was initially puzzling to us, since in our hands, NG2 is expressed only at very low levels by quiescent CNS resident microglia, peritoneal macrophages, bone marrow-derived macrophages, RAW264.7 mouse macrophages, and THP-1 human monocytes. However, the work of Bu *et al.* (2001) [6] makes the important point that NG2 is expressed by activated, rather than quiescent, macrophages, in kainic acid-induced lesions in the CNS. This apparently is also true for microglia, which are induced to express NG2 following lipopolysaccharide (LPS) injection [11]. Consistent with these observations is our recent finding that NG2 expression can be induced in primary macrophages and in both RAW264.7 and THP-1 cells by treatment with toll-like receptor ligands such as poly-I:C or LPS [12].

Figure 1 shows an example of NG2 expression induced in RAW264.7 cells by treatment with LPS. These findings suggest that NG2 expression may be up-regulated on circulating monocytes *in vivo* in response to signals received from sites of inflammation, and that this event may be part of the transition from monocytes to macrophages. The report from Bu *et al.* (2001) [6] further notes the transience of NG2 expression by macrophages, a phenomenon that we have noted both *in vivo* and *in vitro*. This observation may have relevance to the functional role of NG2 in macrophage biology; i.e. NG2 could be more important for initial stages of macrophage recruitment than for subsequent macrophage activities at sites of inflammation.

3. NG2-dependent macrophage contributions to CNS pathologies

Although NG2 expression by macrophages is not limited to CNS pathologies, several published studies have focused on macrophages that infiltrate damaged CNS areas. This is partly because of the need to distinguish between the contributions of macrophages and oligodendrocyte progenitor cells (OPCs), both of

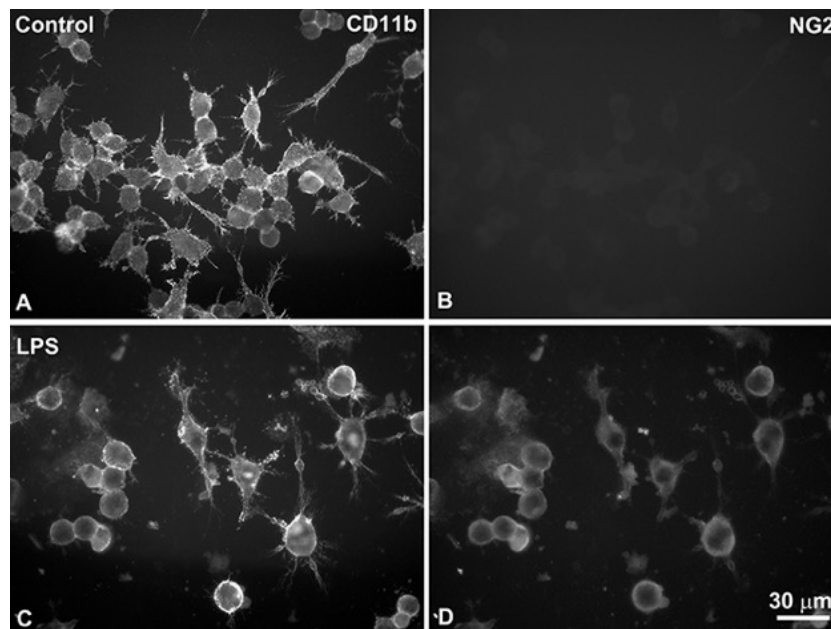


Figure 1. Induction of NG2 expression in RAW264.7 macrophages. Double immunolabeling for the macrophage marker CD11b (A, C) and NG2 (B, D) was carried out at 4 °C on living RAW264.7 mouse macrophages under control conditions (A, B) and after a two-day stimulation with 2 µg/ml LPS (C, D). NG2 expression on cell surfaces is not detectable prior to stimulation, but is evident after activation with the toll-like receptor ligand. Bar in D = 30 µm.

which express NG2 in CNS lesions. This is emphasized by our own work on brain tumor progression and on myelin damage and repair.

3.1. Intracranial melanoma progression

Several publications have noted the potentiating effects of NG2 expression on glioma and melanoma growth, establishing positive correlations between NG2 expression and glioma malignancy [13-19]. In almost all cases, the focus of the work has been on the importance of tumor cell NG2 for glioma malignancy and progression. To examine specifically the importance of NG2 in the stromal compartment, we have used intracranial microinjection of B16F10 melanoma cells [20] to investigate the role of NG2 in melanoma progression in the brain. Because B16F10 cells are NG2-negative, these studies have allowed us to focus on the importance of NG2 expression in the host stroma [21]. By comparing intracranial tumor progression in wild-type and germline NG2 null mice [22], we were able to demonstrate a significant role in tumor growth for NG2 expressed by pericytes and macrophages in the host microenvironment. Similar findings were made for growth of MMTV-PyMT mammary tumors in wild-type and germline NG2 null mice [23]. In the case of both brain and mammary tumors, a major factor underlying reduced tumor growth in germline NG2 null mice was a deficiency in tumor vascularization [21, 23].

In order to dissect the respective roles of NG2 in pericyte and macrophage contributions to tumor vascularization and progression, we used Cre-Lox technology for specific ablation of NG2 in these two cell types. NG2 floxed mice [24] were crossed with *pdgfrb*-Cre mice [25, 26] and with *LysM*-Cre mice [27, 28] to generate pericyte-specific (PC-NG2ko) and myeloid-specific (My-NG2ko) mice, respectively. Comparison of intracranial B16F10 tumor growth in control and PC-NG2ko mice revealed slower tumor growth in the PC-NG2ko animals [29, 30] (Figure 2C, D). The diminished tumor growth in PC-NG2ko mice appeared to be due at least in part to deficits in vascular function. Tumor vessels in PC-NG2ko mice exhibited decreased patency and increased leakiness compared to tumor vessels in control mice, resulting in higher levels of tumor hypoxia [29] (Table 1).

Tumor growth in My-NG2ko mice was retarded to an even greater degree than in PC-NG2ko mice [30] (Figure 2A, B). Interestingly, vascular deficits in

tumors in My-NG2ko mice were more pronounced than in PC-NG2ko mice, providing a possible explanation for the greater reduction in tumor growth. In addition to reduced vessel patency and greater vessel leakiness, the diameter of tumor vessels in My-NG2ko mice was reduced by half, a phenomenon not seen in PC-NG2ko mice (Table 1; Figure 5). As a result of these vascular changes, tumor hypoxia was increased in My-NG2ko mice to a greater extent than in PC-NG2ko mice [30].

3.2. Spinal cord demyelination and remyelination

NG2 is frequently used as a marker for OPCs in studies of myelin damage and repair [31-34]. Importantly, our studies on lysolecithin-induced myelin damage in the spinal cord reveal that in addition to OPCs, NG2 is also expressed by macrophages and pericytes in demyelinated lesions [35]. It is therefore of importance to investigate the overall significance of NG2 expression in this model, for the sake of both NG2 utility as a marker and understanding NG2 functions in the various cell types. Our initial studies used microinjection of lysolecithin into the dorsal spinal cord white matter to compare myelin damage and repair in wild-type mice and germline NG2 null mice. Lesions in NG2 null mice were smaller at 1-week post-lysolecithin injection than lesions in wild-type mice. Nevertheless, myelin repair was retarded in the NG2 null animals, such that at 6-weeks post-injury remyelination was still incomplete. Germline ablation of NG2 resulted in reduced proliferation of OPCs, macrophages, and pericytes in demyelinated lesions at 1-week post-injury, such that the abundance of all 3 cell types was decreased in lesion sites.

Because OPCs and macrophages were the most abundant NG2-expressing cell types in lysolecithin-induced lesions, we used Cre-Lox methods to ablate NG2 in these two cell types. The My-NG2ko mice have been described above. OPC-specific NG2 null mice were generated by crossing NG2 floxed mice [24] with *Olig2*-Cre mice [36]. While lysolecithin-induced spinal cord lesions in OPC-NG2ko mice were similar in size at 1-week post-injury to lesions in control mice, repair of these lesions was retarded, due to reduced OPC proliferation that limited the production of myelinating oligodendrocytes (Table 2 lines 4, 5, 6). At 6-weeks post-injury, unmyelinated axons were still abundant in OPC-NG2ko mice, as judged by immunolabeling for myelin basic protein (MBP) and by high-resolution quantification in

semi-thin sections of unmyelinated axons and myelin thickness [37] (Figure 3B, E; Table 2, lines 7, 8). Numbers of surviving neurons were also diminished

in lesions in OPC-NG2ko mice at 6-weeks post-injury Table 2, line 9), emphasizing the importance of myelin for neuronal health.

Table 1. Differences in vessel structure and function between control and NG2 null mice[#].

Parameter	Change (versus control mice)		
	Germline-NG2ko mice	PC-NG2ko mice	Mac-NG2ko mice
Vessel structure			
Pericyte coverage of endothelial cells	45% decrease	33% decrease	47% decrease
Detached pericyte	200% increase	Unchanged	181% increase
Vessel diameter	20% decrease*	Unchanged	53% decrease
Basal lamina assembly	73% decrease	31% decrease	72% decrease
N-cadherin (endothelial cell)	N.D.	Unchanged	74% decrease
N-cadherin (pericyte)	N.D.	Unchanged	97% decrease
Vessel function			
Vessel patency	50% decrease	43% decrease	48% decrease
Vessel leakiness	400% increase	270% increase	416% increase
Intratumoral hypoxia	2000% increase	560% increase	1580% increase

*Change in vessel diameter of spontaneous mammary tumors between control and global-NG2 ko mice [23].

[#]Reproduced with permission from Yotsumoto, F., You, W. K., Cejudo-Martin, P., Kucharova, K., Sakimura, K. and Stallcup, W. B. 2015, *Oncoimmunol.*, 4, e1001204.

Table 2. Effects of cell type-specific ablation of NG2 on cell and axon biology.

		Control	OPC-NG2ko	My-NG2ko
Sham-operated animals				
1	Number of Olig2+ cells	115.27 ± 3.8	111.02 ± 5.7	117.63 ± 5.4
2	Number of Olig2+/PDGF-Rα+ OPCs	14.55 ± 1.7	12.31 ± 2	14.46 ± 3.5
1 week after demyelination				
3	Number of Iba1+ macrophages/ microglia	117.19 ± 22.3	120.1 ± 28.1	39.64 ± 19.8**
4	Number of Olig2+/PDGF-Rα+ OPCs	42.92 ± 1.5	32.4 ± 1.7***	23.02 ± 7.2***
5	Mitotic index of Olig2+/PDGF-Rα+ OPCs (%)	22.91 ± 3.5	13.49 ± 1.5**	11.93 ± 2.1***
6 weeks after demyelination				
6	Number of APC+ oligodendrocytes	62.14 ± 6.7	44.48 ± 8.6*	43.17 ± 4.1**
7	Well-myelinated axons	1056 ± 133	480 ± 128**	499 ± 80**
8	Myelin thickness (G-value)	0.745 ± 0.089	0.861 ± 0.099***	0.87 ± 0.065***
9	Number of NF-positive axons			
	Small: diameter < 1 μm	1103 ± 60	660 ± 66***	812 ± 85**
	Medium: diameter = 1-2.5 μm	201 ± 29	135 ± 10*	118 ± 14*
	Large: diameter > 2.5 μm	18 ± 3	6 ± 1**	8 ± 2*

The key parameters for Olig2/PDGFRα-positive OPCs, Iba1-positive macrophages/microglia, and APC-positive oligodendrocytes were quantified by immunolabeling in lesions in control, OPC-NG2ko, and My-NG2ko mice (n = 4 for each group) from 1 to 6 weeks after lysolecithin microinjection into the dorsal spinal cord white matter (lines 1-6). Myelination parameters and axon diameters were determined in toluidine blue-stained semi-thin sections (lines 7-9). G-value = diameter of axon only/diameter of axon + myelin sheath. Cell and axon numbers are determined in volumes of 100,000 μm³. Values represent means ± SD. Statistically significant values evaluated by ANOVA and t-test are indicated by *P < 0.05, **P < 0.01, ***P < 0.001. (Reproduced with permission from Kucharova, K. and Stallcup, W. B. 2015, *J. Neuroinflamm.*, 12, 161.)

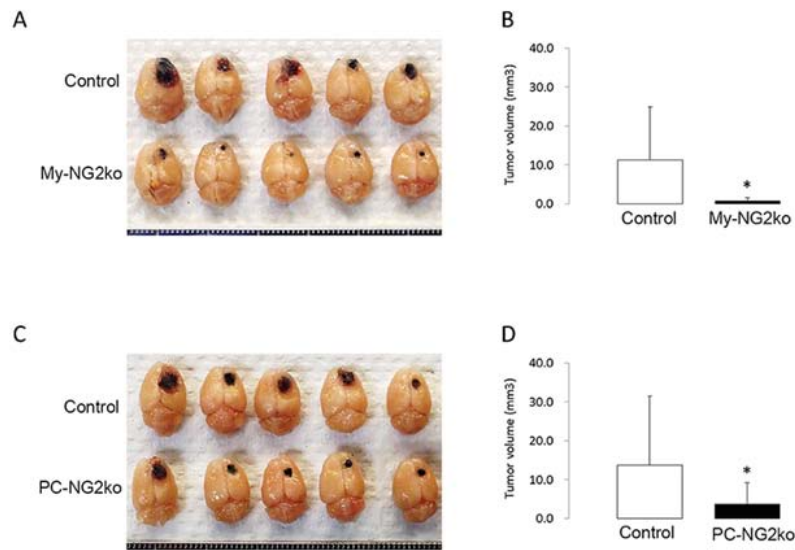


Figure 2. Intracranial melanoma growth in NG2 null mice. Brain tumors were initiated in control, PC-NG2ko, and My-NG2ko mice by intracranial microinjection of 2×10^4 pigmented B16F10 melanoma cells. Animals were euthanized after 10 days for determination of tumor volumes (mm³). (A, B): Control mice (n = 21) versus My-NG2ko mice (n = 20). (C, D): Control mice (n = 22) versus PC-NG2ko mice (n = 18). *p < 0.01. (Reproduced with permission from Yotsumoto, F., You, W. K., Cejudo-Martin, P., Kucharova, K., Sakimura, K. and Stallcup, W. B. 2015, *Oncoimmunol.*, 4, e1001204.)

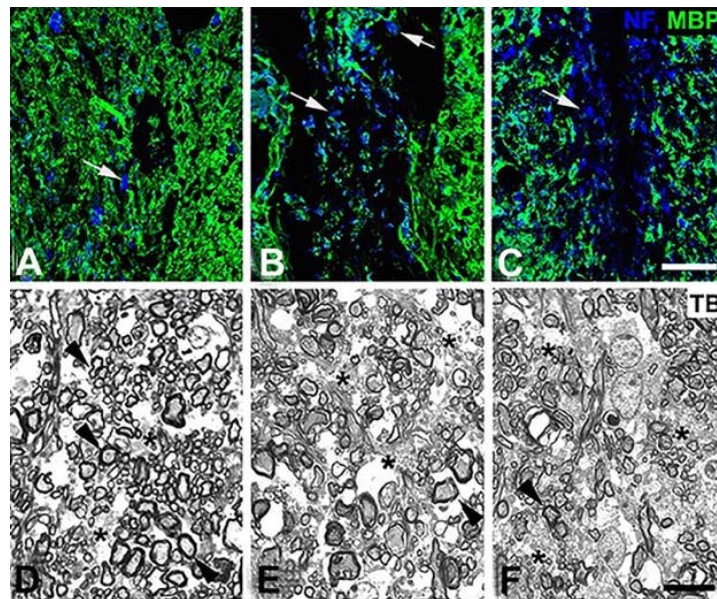


Figure 3. Myelin repair in NG2 null mice. Six weeks after lyssolecithin microinjection (1.5 μ l of 1% lyssolecithin) into the dorsal spinal cord white matter of control, OPC-NG2ko and My-NG2ko mice, animals were euthanized for determination of the extent of myelin repair. (A-C): Tissue sections were immunolabeled for myelin basic protein (MBP; green) and neurofilament protein (NF; blue), allowing visualization of myelinated axons and axons lacking association with myelin (arrows). (D-F): Toluidine blue-stained (TB) semi-thin sections enabled identification of well-myelinated axons (arrowheads) and unmyelinated axons (asterisks), along with determination of g-values for evaluating myelin thickness. Controls: A, D; OPC-NG2ko: B, E; My-NG2ko: C, F. Bar in C = 30 μ m. Bar in F = 10 μ m. (Reproduced with permission from Kucharova, K. and Stallcup, W. B. 2015, *J. Neuroinflamm.*, 12, 161.)

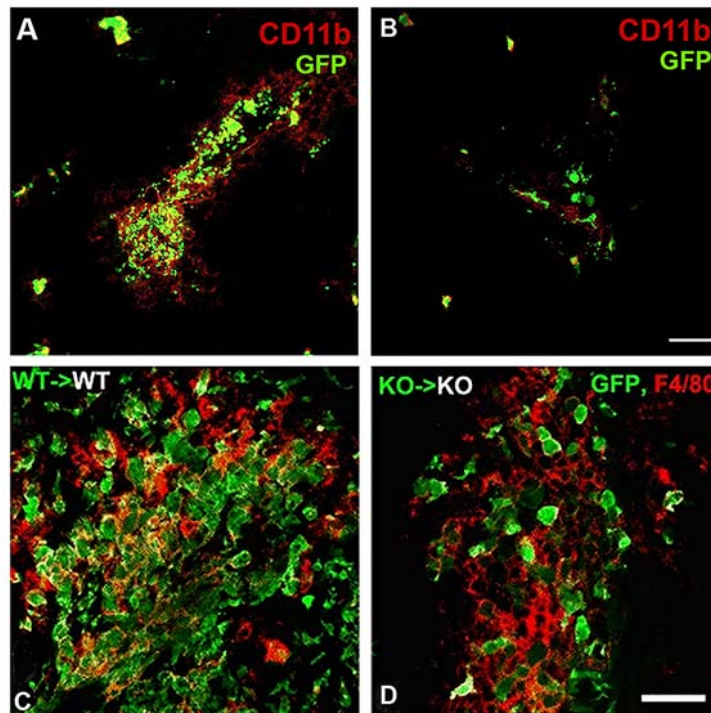


Figure 4

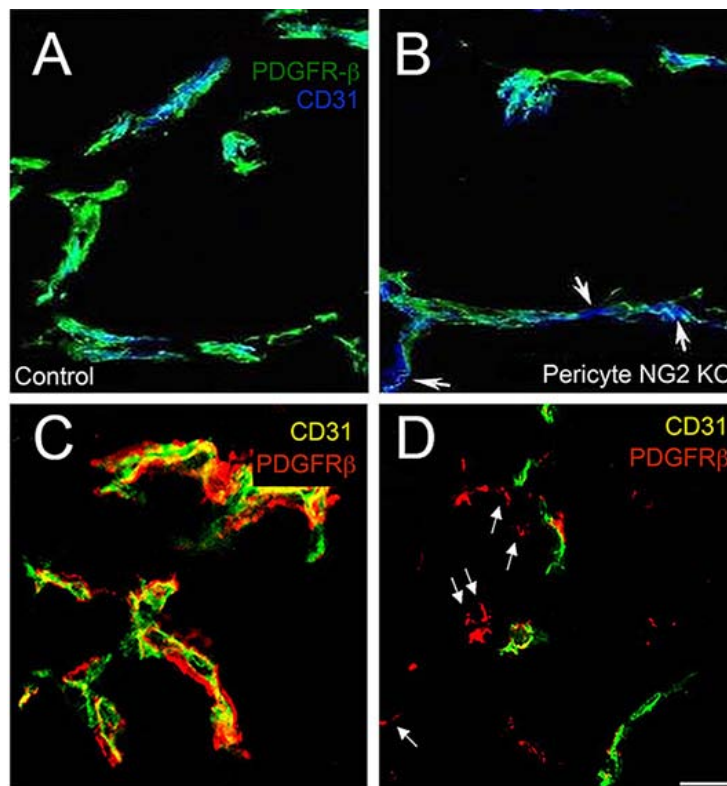


Figure 5

In contrast to OPC-NG2ko mice, demyelinated lesions in My-NG2ko mice were reduced in size by almost 50% at 1-week post-injury compared to lesions in control mice. In spite of this reduced size, lesion repair was retarded in My-NG2ko mice, such that remyelination was still incomplete at 6-weeks post-injury. Surprisingly, OPC abundance was diminished in My-NG2ko mice to an extent at least as great as seen in OPC-NG2ko mice, even though OPCs still retain NG2 expression in the myeloid-specific knockouts (Table 2, lines 4, 5). This offers a possible explanation for diminished myelin repair in the My-NG2ko animals. As in OPC-NG2ko mice, immunolabeling for MBP and examination of semi-thin sections from 6-week My-NG2ko lesions revealed more unmyelinated axons, reduced myelin thickness, and fewer surviving axons than in control mice [37] (Figure 3C, F; Table 2, lines 7, 8, 9).

4. NG2-dependent macrophage recruitment

In a number of other cell types, NG2 promotes cell proliferation and/or motility [5, 29, 38-41]. It has therefore been of interest to investigate the effects of NG2 ablation on macrophage abundance in CNS lesions. While the decreased abundance of

macrophages we observe in both brain tumors and demyelinated spinal cord lesions in My-NG2ko mice (described below) could be due to reduced proliferation, it could also be due to increased apoptosis, reduced responsiveness to macrophage recruitment signals such as M-CSF, CCL2, or CXCL12, or to diminished endothelial attachment and extravasation from the circulation into tissues. Our finding of reduced $\beta 1$ and $\beta 2$ integrin activation in NG2 knockdown THP-1 macrophages might be relevant to any of these mechanisms [12].

4.1. Intracranial melanomas

Pericyte-specific ablation of NG2 had no effect on either pericyte abundance or macrophage abundance in intracranial melanomas [29, 30]. In contrast, macrophage abundance in these melanomas was greatly diminished in My-NG2ko mice [30], as judged by immunolabeling for the macrophage markers F4/80, CD11b, and CD18. Figure 4A, B shows that a similar loss of macrophage recruitment was observed in intracranial melanomas in wild-type mice that had been previously gamma-irradiated and reconstituted with enhanced green fluorescent protein (EGFP)-labeled bone marrow from β -actin

Legend to Figure 4. Macrophage recruitment in NG2 null mice. Gamma-irradiated wild-type mice were engrafted with bone marrow from wild-type β -actin-EGFP donors or with bone marrow from germline NG2 null β -actin-EGFP donors. After a 6-week recovery, chimeric mice were used for establishment of intracranial B16F10 tumors (A, B) and for lysolecithin-induced spinal cord demyelination (C, D). (A, B): At 10 days post-tumor initiation, animals were euthanized for analysis of macrophage infiltration into tumors. Immunolabeling for CD11b (red) was compared to the EGFP marker for identification of bone marrow-derived macrophages in tumors in mice receiving wild-type bone marrow (A) and mice receiving NG2 null bone marrow (B). Bar in B = 40 μ m. (C, D): After a 6-week recovery, chimeric mice were used for lysolecithin induction of spinal cord demyelination. At 1-week post-injury, animals were euthanized for analysis of macrophage infiltration of demyelinated lesions. Immunolabeling for F4/80 (red) was compared to the EGFP marker for identification of bone marrow-derived macrophages in lesions in mice receiving wild-type bone marrow (C) and mice receiving NG2 null bone marrow (D). Bar in D = 20 μ m. (Reproduced with permission from Yotsumoto, F., You, W. K., Cejudo-Martin, P., Kucharova, K., Sakimura, K. and Stallcup, W. B. 2015, *Oncoimmunol.*, 4, e1001204 and from Kucharova, K. and Stallcup, W. B. 2015, *J. Neuroinflamm.*, 12, 161.)

Legend to Figure 5. Pericyte ensheathment of endothelial cells in tumors in NG2 null mice. Vessels in intracranial B16F10 tumors were compared at 10 days in control (A) versus PC-NG2ko (B) mice, and in control (C) versus My-NG2ko (D) mice by immunolabeling sections for CD31 (endothelial cells) and PDGFR β (pericytes). Pericyte (green) ensheathment of endothelial cells (blue) is incomplete in PC-NG2ko vessels (B), as judged by gaps in coverage (arrows). These gaps are not present in control vessels (A). In My-NG2ko vessels (D), many pericytes (red, arrows) fail to associate with endothelial cells (green). These detached pericytes are not seen in control vessels (C). These images also highlight the reduced diameter of vessels in My-NG2ko mice, a phenotype that is not observed in PC-NG2ko mice. Bar in D = 20 μ m. (Reproduced with permission from You, W. K., Yotsumoto, F., Sakimura, K., Adams, R. H. and Stallcup, W. B. 2014, *Angiogenesis*, 17, 61 and from Yotsumoto, F., You, W. K., Cejudo-Martin, P., Kucharova, K., Sakimura, K. and Stallcup, W. B. 2015, *Oncoimmunol.*, 4, e1001204.)

EGFP/germline NG2 null mice [30], demonstrating that loss of macrophage recruitment is independent of the method of NG2 ablation. The fact that the large majority of CD11b expressing cells in tumors in mice receiving wild-type bone marrow are positive for the EGFP marker further indicates that these tumor myeloid cells are macrophages rather than resident microglia. The fact that My-NG2ko mice do not exhibit decreased abundance of circulating monocytes [30] suggests that the reduction in tumor macrophage number is not due to deficits in generating monocytes.

4.2. Demyelinated lesions in spinal cord

While OPC-specific ablation of NG2 had no effect on macrophage abundance in demyelinated spinal cord lesions, macrophage numbers were greatly reduced in lesions in My-NG2ko mice at 1-week post-injury [37] (Table 2, line 3). Demyelinated lesions in wild-type mice that had been previously gamma-irradiated and reconstituted with NG2 null EGFP-labeled bone marrow also exhibited this loss of macrophage abundance (Figure 4C, D), compared to wild-type mice that received wild-type EGFP-labeled bone marrow [37]. As in the case of brain tumors, the presence of the EGFP marker in more than 80% of F4/80-positive myeloid cells suggests that most of these lesional cells are bone marrow-derived macrophages rather than resident microglia.

5. Secondary effects of macrophages on other cell types

Macrophages are widely acknowledged to be an important source of factors that can affect other cells in the microenvironment, including tumor cells, OPCs, and vascular cells [42-48]. Our studies have implicated macrophage-derived signals in the biology of both pericytes (in brain tumors) and OPCs (in myelin repair).

5.1. Intracranial melanomas

It was noted above that vascular defects in tumors in PC-NG2ko mice are reflected by increased tumor hypoxia and reduced tumor growth. These vascular deficits appear to arise from a decrease in pericyte ensheathment of endothelial cells (Figure 5A, B), due to loss of pericyte NG2 activation of $\beta 1$ integrin signaling in the endothelial cells [29]. This signaling deficit leads to reduced formation of intercellular junctions between endothelial cells and diminished

assembly of the vascular basement membrane (Table 1). Pericyte maturation is also impaired by the loss of pericyte-endothelial cell interaction. These structural defects give rise to the deficits in patency and leakiness that are detected in tumor vessels.

Surprisingly, vascular defects are more pronounced in tumors in My-NG2ko mice than in PC-NG2ko mice [30]. Even though pericytes still retain NG2 expression in My-NG2ko mice, pericyte ensheathment of endothelial cells is nevertheless reduced to a greater degree than in PC-NG2ko mice. In fact, even though pericyte abundance is unaffected, many pericytes fail to interact at all with endothelial cells in the macrophage-deficient tumors [30] (Figure 5C, D). Significantly, expression of N-cadherin is reduced in these mice on both pericytes and endothelial cells, providing a possible explanation for decreased pericyte-endothelial cell interaction. Formation of endothelial junctions, assembly of the vascular basal lamina, and pericyte maturation are reduced to a greater extent in My-NG2ko mice than in PC-NG2ko mice (Table 1), suggesting mechanisms that underlie the functional deficits in these tumor vessels. We hypothesize that the reduced macrophage abundance in My-NG2ko tumors results in loss of a macrophage-derived signal that is required for promoting pericyte interaction with endothelial cells. This putative signal might be responsible for triggering N-cadherin expression in the two vascular cell populations as a means of promoting vessel formation. These observations are relevant to a growing number of reports on the importance of tumor macrophages for tumor vascularization [49, 50].

5.2. Demyelinated lesions in spinal cord

Based on previously known mechanisms of NG2 action [4, 5], it was predictable to us that OPC-specific ablation of NG2 would lead to reduced OPC proliferation, and thus to decreased generation of mature oligodendrocytes and diminished myelination [37]. Much more surprising, however, was the finding that myeloid-specific ablation of NG2 led to an equivalent or even greater decrease in OPC proliferation, and to comparable deficits in myelin repair. Two possible explanations for this effect are that reduced macrophage abundance in My-NG2ko lesions (a) diminishes clearance of myelin debris that is inhibitory to OPC proliferation,

and/or (b) reduces production of macrophage-derived factors that promote OPC proliferation. Decreased macrophage abundance is most likely also responsible for the reduced myelin damage seen at 1-week post-injury in My-NG2ko mice. It will be of interest to investigate whether these two contrary aspects of macrophage impact on both myelin damage and repair are mediated by the same or distinct populations of macrophages.

6. Prospects and perspectives

Our work so far adds macrophages to the diverse list of cell types that express the NG2 proteoglycan. Our findings are consistent with the overall view that NG2 is not a marker for a specific cell lineage, but is expressed by cells that have been activated in some way, whether as part of a normal developmental program or as part of a response to pathological stimuli [5]. Macrophages appear to be an extreme example of the transience of NG2 expression, which is observed in many NG2-positive progenitors as these cells differentiate. The work reviewed here identifies NG2 as a marker for activated macrophages, and more importantly, establishes NG2 as an important player in macrophage colonization of sites of inflammation in the CNS. More work will be required to determine mechanisms by which NG2 promotes macrophage abundance in these sites (recruitment, extravasation, proliferation, survival) and to establish whether these findings can be generalized to include sites of inflammation in other pathologies. An additional topic of importance will be determining whether NG2 continues to influence macrophage function subsequent to infiltration into tissues. In our CNS models, these functions would include the production of factors that are important for OPC proliferation and for pericyte interaction with endothelial cells, but it can be imagined that NG2 might also be important for determining macrophage polarization toward immune-suppressive versus inflammatory phenotypes. Identification of factors that control the extreme phenotypic plasticity of macrophages is a key aspect of working with these myeloid cells.

ACKNOWLEDGEMENTS

We thank Regina Kapono for her help in preparing the manuscript. This work was supported by NIH

grant RO1 CA95287 and by Sanford Burnham Prebys Lab Funding Initiative to WBS.

CONFLICT OF INTEREST STATEMENT

The authors declare that they have no conflicts of interest in this work.

ABBREVIATIONS

CCL2	: chemokine ligand 2
CNS	: central nervous system
Cre	: Cre recombinase
CXCL12	: chemokine ligand 12
EGFP	: enhanced green fluorescent protein
Flox	: flanked by LoxP sites
LPS	: lipopolysaccharide
Lys	: lysozyme
MBP	: myelin basic protein
M-CSF	: macrophage colony stimulating factor
MMTV-PyMT	: polyoma middle T driven by mouse mammary tumor virus promoter
My	: myeloid
NG2	: nerve-glia antigen 2
Olig2	: oligodendrocyte transcription factor 2
PC	: pericyte
PDGFR α	: platelet-derived growth factor receptor alpha
PDGFR β	: platelet-derived growth factor receptor beta
Poly-I:C	: poly-inosinic:polycytidylic acid

REFERENCES

1. Qian, B. Z. and Pollard, J. W. 2010, *Cell*, 141, 39.
2. Noy, R. and Pollard, J. W. 2014, *Immunity*, 41, 49.
3. She, Z. G., Chang, Y., Pang, H. B., Han, W., Chen, H. Z., Smith, J. W. and Stallcup, W. B. 2016, *Arterioscler. Thromb. Vasc. Biol.*, 36, 49.
4. Stallcup, W. B. 2002, *J. Neurocytol.*, 31, 423.
5. Stallcup, W. B. and Huang, F. J. 2008, *Cell Adh. Migr.*, 2, 192.
6. Bu, J., Akhtar, N. and Nishiyama, A. 2001, *Glia*, 34, 296.

7. de Castro, R. Jr., Tajrishi, R., Claros, J. and Stallcup, W. B. 2005, *Exp. Neurol.*, 192, 299.
8. Jones, L. L., Yamaguchi, Y., Stallcup, W. B. and Tuszyński, M. H. 2002, *J. Neurosci.*, 22, 2792.
9. Larsen, P. H., Wells, J. E., Stallcup, W. B., Opdenakker, G. and Yong, V. W. 2003, *J. Neurosci.*, 23, 11127.
10. Tigges, U., Hyer, E. G., Scharf, J. and Stallcup, W. B. 2008, *Development*, 135, 523.
11. Gao, Q., Lu, J., Huo, Y., Baby, N., Ling, E. A. and Dheen, S. T. 2010, *Neurosci.*, 2010, 165, 386.
12. Stallcup, W. B., You, W. K., Kucharova, K., Cejudo-Martin, P. and Yotsumoto, F. 2016, *Microcirc.*, 23, 122.
13. Ligon, K. L., Alberta, J. A., Kho, A. T., Weiss, J., Kwaan, M. R., Nutt, C. L., Louis, D. N., Stiles, C. D. and Rowitch, D. H. 2004, *J. Neuropathol. Exp Neurol.*, 63, 509.
14. Al-Mayhany, M. T., Grenfell, R., Narita, M., Piccirillo, S., Kenney-Herbert, E., Fawcett, J. W., Collins, V. P., Ichimura, K. and Watts, C. 2011, *Neuro-oncol.*, 13, 830.
15. Chekenya, M., Krakstad, C., Svendsen, A., Netland, I. A., Staalesen, V., Tysnes, B. B., Selheim, F., Wang, J., Sakariassen, P. O., Sandal, T., Lonning, P. E., Flatmark, T., Enger, P. O., Bjerkgvig, R., Sioud, M. and Stallcup, W. B. 2008, *Oncogene*, 27, 5182.
16. Persson, A. I., Petritsch, C., Swartling, F. J., Itsara, M., Sim, F. J., Auvergne, R., Goldenberg, D. D., Vandenberg, S. R., Nguyen, K. N., Yakovenko, S., Ayers-Ringler, J., Nishiyama, A., Stallcup, W. B., Berger, M. S., Bergers, G., McKnight, T. R., Goldman, S. A. and Weiss, W. A. 2010, *Cancer Cell*, 18, 669.
17. Price, M. A., Colvin Wanshura, L. E., Yang, J., Carlson, J., Xiang, B., Li, G., Ferrone, S., Dudek, A. Z., Turley, E. A. and McCarthy, J. B. 2011, *Pigment Cell Melanoma Res.*, 24, 1148.
18. Wang, J., Svendsen, A., Kmiecik, J., Immervoll, H., Skafnesmo, K. O., Planaguma, J., Reed, R. K., Bjerkgvig, R., Miletic, H., Enger, P. O., Rygh, C. B. and Chekenya, M. 2011, *PLoS ONE*, 6, e23062.
19. Yadavilli, S., Hwang, E. I., Packer, R. J. and Nazarian, J. 2016, *Trans. Oncol.*, 9, 63.
20. Fidler, I. J. 1975, *Cancer Res.*, 1975, 35, 218.
21. Huang, F. J., You, W. K., Bonaldo, P., Seyfried, T. N., Pasquale, E. B. and Stallcup, W. B. 2010, *Dev. Biol.*, 344, 1035.
22. Grako, K. A., Ochiya, T., Barritt, D., Nishiyama, A. and Stallcup, W. B. 1999, *J. Cell. Sci.*, 112, 905.
23. Gibby, K., You, W. K., Kadoya, K., Helgadottir, H., Young, L. J., Ellies, L. G., Chang, Y., Cardiff, R. D. and Stallcup, W. B. 2012, *Breast Cancer Res.*, 14, R67.
24. Chang, Y., She, Z. G., Sakimura, K., Roberts, A., Kucharova, K., Rowitch, D. H. and Stallcup, W. B. 2012, *PLoS ONE*, 7, e30637.
25. Foo, S. S., Turner, C. J., Adams, S., Compagni, A., Aubyn, D., Kogata, N., Lindblom, P., Shani, M., Zicha, D. and Adams, R. H. 2006, *Cell*, 124, 161.
26. Stenzel, D., Nye, E., Nisancioglu, M., Adams, R. H., Yamaguchi, Y. and Gerhardt, H. 2009, *Blood*, 114, 915.
27. Clausen, B. E., Burkhardt, C., Reith, W., Renkawitz, R. and Forster, I. 1999, *Transgenic Res.*, 8, 265.
28. Stockmann, C., Doedens, A., Weidemann, A., Zhang, N., Takeda, N., Greenberg, J. I., Cheresch, D. A. and Johnson, R. S. 2008, *Nature*, 456, 814.
29. You, W. K., Yotsumoto, F., Sakimura, K., Adams, R. H. and Stallcup, W. B. 2014, *Angiogenesis*, 17, 61.
30. Yotsumoto, F., You, W. K., Cejudo-Martin, P., Kucharova, K., Sakimura, K. and Stallcup, W. B. 2015, *Oncoimmunol.*, 4, e1001204.
31. Chang, A., Nishiyama, A., Peterson, J., Prineas, J. and Trapp, B. D. 2000, *J. Neurosci.*, 20, 6404.
32. Watanabe, M., Toyama, Y. and Nishiyama, A. 2002, *J. Neurosci. Res.*, 69, 826.
33. Boda, E. and Buffo, A. 2014, *Frontiers Neurosci.*, 8, 122.
34. Kang, Z., Wang, C., Zepp, J., Wu, L., Sun, K., Zhao, J., Chandrasekharan, U., DiCorleto, P. E., Trapp, B. D., Ransohoff, R. M. and Li, X. 2013, *Nature Neurosci.*, 16, 1401.
35. Kucharova, K., Chang, Y., Boor, A., Yong, V. W. and Stallcup, W. B. 2011, *J. Neuroinflamm.*, 8, 158.
36. Schuller, U., Heine, V. M., Mao, J., Kho, A. T., Dillon, A. K., Han, Y. G., Huillard, E., Sun, T., Ligon, A. H., Qian, Y., Ma, Q., Alvarez-Buylla, A., McMahon, A. P., Rowitch, D. H. and Ligon, K. L. 2008, *Cancer Cell*, 14, 123.

37. Kucharova, K. and Stallcup, W. B. 2015, *J. Neuroinflamm.*, 12, 161.
38. Kucharova, K. and Stallcup, W. B. 2010, *Neurosci.*, 166, 185.
39. Kadoya, K., Fukushi, J., Matsumoto, Y., Yamaguchi, Y. and Stallcup, W. B. 2008, *J. Histochem. Cytochem.*, 56, 295.
40. Makagiansar, I. T., Williams, S., Mustelin, T. and Stallcup, W. B. 2007, *J. Cell. Biol.*, 178, 155.
41. Makagiansar, I. T., Williams, S., Dahlin-Huppe, K., Fukushi, J., Mustelin, T. and Stallcup, W. B. 2004, *J. Biol. Chem.*, 279, 55262.
42. Franklin, R. J. and Hinks, G. L. 1999, *J. Neurosci. Res.*, 58, 207.
43. Hinks, G. L. and Franklin, R. J. 1999, *Mol. Cell. Neurosci.*, 14, 153.
44. Mason, J. L., Ye, P., Suzuki, K., D'Ercole, A. J. and Matsushima, G. K. 2000, *J. Neurosci.* 20, 5703.
45. Miron, V. E., Boyd, A., Zhao, J. W., Yuen, T. J., Ruckh, J. M., Shadrach, J. L., van Wijngaarden, P., Wagers, A. J., Williams, A., Franklin, R. J. and Ffrench-Constant, C. 2013, *Nature Neurosci.*, 16, 1211.
46. Bonde, A. K., Tischler, V., Kumar, S., Soltermann, A. and Schwendener, R. A. 2012, *BMC Cancer*, 12, 35.
47. Fan, Q. M., Jing, Y. Y., Yu, G. F., Kou, X. R., Ye, F., Gao, L., Li, R., Zhao, Q. D., Yang, Y, Lu, Z. H. and Wei, L. X. 2014, *Cancer Lett.*, 352, 160.
48. Rymo, S. F., Gerhardt, H., Wolfhagen Sand, F., Lang, R., Uv, A. and Betsholtz, C. 2011, *PloS One*, 6, e15846.
49. Coffelt, S. B., Lewis, C. E., Naldini, L., Brown, J. M., Ferrara, N. and De Palma, M. 2010, *Am. J. Pathol.*, 176, 1564.
50. De Palma, M., Venneri, M. A., Galli, R., Sergi, L., Politi, L. S., Sampaolesi, M. and Naldini, L. 2005, *Cancer Cell*, 8, 211.